

NISSAN QASHQAI ELECTRONIC BROCHURE



Created on 11 June 2008 05:21 (UK time)





Exterior and Interior

Exterior colours

Interior trims

Performance

Safety and Security

Available grades

Full equipment list

Price Matrix

Options

Prices

NISSAN QASHQAI

Exterior and Interior

Stop the traffic

INTERIOR



Cockpit-style cabin

QASHQAI's cockpit-style cabin is specially adapted for city living. It concentrates the controls around the driver for a sporty feel. For passengers, it's spacious and refined.



Spacious and Relaxing

QASHQAI's high centre console creates an independent driver space, with all the controls ergonomically located at your fingertips. The glass roof* adds to the airy, spacious feeling, while the seats comfortably cradle you with optimum support.

*subject to grade / options chosen



Your own space

QASHQAI's cockpit-style cabin curves around you, creating the kind of driver-centric experience that a pilot may enjoy. The ergonomically-designed high centre console places all the controls at your fingertips.

EXTERIOR



A distinctive, powerful design

QASHQAI has a different kind of elegance. Strong shoulders, bulging wheel arches and a cambering roofline come together to create a sleek, dynamic style. QASHQAI commands respect even on the meanest streets.



Crossover thinking

QASHQAI combines the sleek compact design and street-savvy manoeuvrability of a hatchback with the toughness of an SUV. With its high ground clearance, QASHQAI can straddle bumps, humps and obstacles with ease, in the city and off-road, while ALL-MODE 4x4®*and ESP* provide superior traction and handling.

NISSAN QASHQAI

Exterior and Interior

EXTERIOR COLOURS



Intense Blue (M)



Flame Red (S)



Fired Iron (M)



Pearl Black (M)



Cayman Blue (M)



Sandblast (M)



Caffé Latte (M)



Faded Denim (M)



Blade (M)



Urban Silver (M)

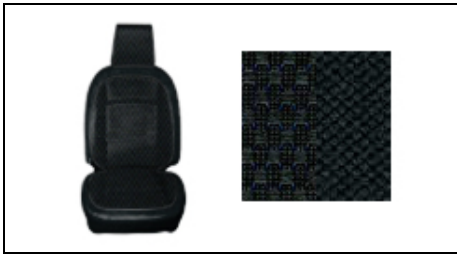


Arctic White (S)

S=Solid, M=Metallic, PM=Pearl Metallic

Exterior and Interior

INTERIOR TRIMS



Charcoal



Graphite



Graphite Leather



Chocolate Leather



Chocolate & Orange

Performance

City-smart power

ENGINE



Efficient petrol engines

Choose your lightweight aluminium petrol engine: The economical yet efficient 1.6 115PS model gives you 2-wheel drive with a 5-speed manual transmission. The brand new 2.0 140PS engine offers either a 6-speed gearbox or easy-going CVT, in both 2- or 4-wheel drive. And it delivers smooth performance and plenty of power in every gear.



Latest technology diesel engines

Choose your dCi diesel engine: The high efficiency 1.5 dCi 106PS engine gives you 2-wheel drive with a 6-speed gearbox, along with low fuel consumption and CO2 emissions. Feeling more adventurous? The state of the art 2.0 dCi 150 PS model is also available in 4-wheel drive, with auto or manual transmission. Its 320 Nm of torque provides an eager, instant response.

HANDLING



ALL-MODE 4x4®

Mud, rain or snow – QASHQAI'S ALL-MODE 4x4®*electronic system offers maximum traction and instant response, with up to 50% torque transfer to the rear wheels. Whatever the weather or surface, you have the confidence of knowing that the 4-wheel drive will engage automatically when conditions demand it. *subject to model / options selected



Multilink rear suspension

Go on, take that curve! Independent rear multilink suspension allows secure cornering and ensures stability at high speeds, while smoothing out the bumps.



Electronic power steering

The speed-sensitive electronic power steering makes QASHQAI exceptionally responsive - slip around obstacles, parked cars, and potholes – in fact, whatever the city throws at you.

NISSAN QASHQAI

Performance

	Fuel consumption (mpg)			CO2 Emission Combined (g/km)
	Urban cycle	Extra cycle	Combined cycle	
1.5 dCi 6 speed manual 2WD (5 door hatchback)	47.1	58.9	54.3	139
1.6 16v 5 speed manual 2WD (5 door hatchback)	33.6	49.6	42.2	162
2.0 16v 6 speed manual 2WD (5 door hatchback)	26.4	42.8	34.9	192
2.0 16v 6 speed manual 4WD (5 door hatchback)	25.7	40.9	33.6	199
2.0 16v CVT 2WD (5 door hatchback)	27.2	44.1	35.8	189
2.0 16v CVT 4WD (5 door hatchback)	26.4	40.9	34.0	198
2.0 dCi 6 speed automatic 4WD (5 door hatchback)	28.0	43.5	36.2	208
2.0 dCi 6 speed manual 2WD (5 door hatchback)	32.8	51.4	42.8	174
2.0 dCi 6 speed manual 4WD (5 door hatchback)	32.5	47.9	40.9	184

In accordance with 2004/3/EC optional equipment, driving technique, payload, road and weather conditions may affect actual fuel consumption.

NISSAN QASHQAI

Safety and Security

Feel protected

PASSIVE SAFETY



Six airbags and active headrests

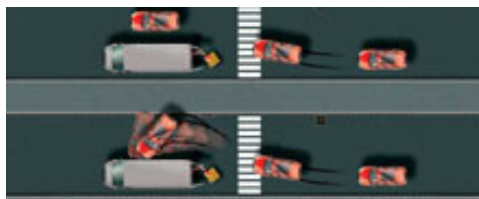
Every QASHQAI comes standard with six airbags. For further intelligent protection, the front seat Active Headrests move forward to reduce the risk of whiplash injury in case of a rear impact.



Passenger airbag cutoff switch

QASHQAI is ready for everything... even children. Its front passenger airbag can be turned off when a child seat is placed in the front.

ACTIVE SAFETY



Eighth generation ESP*

QASHQAI is equipped with the latest generation Electronic Stability Program (ESP)*, keeping you on course. If the car loses grip around a corner, ESP can brake each wheel independently and ease the throttle to rebalance the car. It's so subtle you probably won't know it's working, but under demanding road conditions, you'll certainly appreciate the benefits.

*subject to model / options selected



Advanced braking

QASHQAI stops as well as it drives. ABS (Anti-lock Braking System) is supported by HFC (Hydraulic Fade Compensation) which helps increase pressure to ensure ABS is working on all wheels. EBD (Electronic Brake Force Distribution) automatically regulates the pressure between the front and rear brakes for optimum braking. And CBC (Corner Brake Control) works in harmony with QASHQAI's electronic stability program* to increase stability when braking while cornering.

*subject to model / options selected



Traction control system*

QASHQAI'S traction control system* limits tyre slip when the roads are slick. When the system senses that one wheel is spinning faster than the others, it automatically pumps that wheel's brake to reduce its speed and lessen slip. Meaning safer driving for you.

*subject to model / options selected

NISSAN QASHQAI

Grades & equipment

AVAILABLE GRADES

Grade : VISIA

QASHQAI Visia is bold, with a simple, chic interior trim. It's loaded with features to make taking on your environment more fun: 16" alloy wheels, auto door lock (while driving), electric adjustable & heated door mirrors, 4 power windows, trip computer, Bluetooth-compatible CD audio system and air conditioning with a low pressure function.

From £13,799

Grade : ACENTA

QASHQAI Acenta adds a further touch of elegance and a host of technology. Body coloured door handles and mirrors and a leather bound steering wheel and gearknob are joined by hi-tec features like Rain-sensing wipers, automatic lighting, cruise control, an ultrasonic rear park system and dual zone air conditioning to make driving even more relaxing.

From £15,299

Grade : TEKNA

Indulge yourself! QASHQAI Tekna, with the intelligent key, leather heated seats, panoramic glass roof, auto-dimming mirror and a mood lamp, make for a refined driving experience. Outside, 17" alloy wheels and Xenon headlamps with headlamp washers add a sporty touch.

From £16,799

Grades & equipment

STANDARD FEATURES AND OPTIONS BY GRADE

	VISIA	ACENTA	TEKNA
Safety			
Seatbelt warning lamp (driver, passenger and rear)	■	■	■
Remote central locking with Superlocking	■	■	■
Door ajar warning lamp	■	■	■
Engine immobiliser	■	■	■
ESP (2.0 petrol and 2.0 dCi only)	■	■	■
Ultrasonic alarm system (2.0 petrol model only)	■		
ABS with Brake Assist and EBD	■	■	■
Ultrasonic alarm system		■	■
Driver, passenger, side and curtain airbags	■	■	■
Active front headrests with height adjustment	■	■	■
Front seatbelts with load limiter and pre-tensioner	■	■	■
Front seatbelt height adjustment	■	■	■
3 rear headrests	■	■	■
3 x 3 point rear seatbelts with ELR	■	■	■
Isofix childseat anchorage points (rear)	■	■	■
Rear door child locks	■	■	■
Halogen clear lens headlamps	■	■	
Hazard auto on	■	■	■
Speed-sensitive autolock function	■	■	■
ESP (1.6 petrol and 1.5 dCi)	□	□	□
Front fog lamps		■	■
Auto-dimming mirror			■
Xenon clear lens headlamps with headlamp washers			■
Technology			

Grades & equipment

STANDARD FEATURES AND OPTIONS BY GRADE

	VISIA	ACENTA	TEKNA
Remote audio control		■	■
Electric folding door mirrors		■	■
Audio with Bluetooth compatibility	■	■	■
CD radio with 4 speakers	■		
6 CD in-dash auto-changer		■	■
Rain-sensing wipers		■	■
Audio system with 6 speakers		■	■
Auto lighting system		■	■
Cruise control		■	■
Ultrasonic rear park system		■	■
2 speed wiper with variable intermittent	■	■	■
Rear wiper with intermittent	■	■	■
Intelligent key			■
Front and rear power windows with one touch and anti-trap device (driver's side only)	■	■	■
Electrically adjustable and heated door mirrors	■	■	■
Exterior temperature gauge	■	■	■
Low fuel warning lamp	■	■	■
Oil level indicator	■	■	■
Tachometer	■	■	■
Headlamp on warning buzzer	■	■	■
Front 12v power socket	■	■	■
Drive computer	■	■	■
Diesel particulate filter (2.0dCi only)	■	■	■
Interior/Exterior			
14 litre glovebox with lamp and damped opening	■	■	■

Grades & equipment

STANDARD FEATURES AND OPTIONS BY GRADE

	VISIA	ACENTA	TEKNA
16" alloy wheels with locking wheel nuts	■	■	
Front centre console armrest	■	■	■
Body-coloured front and rear bumpers with black protective cladding	■	■	■
Tilt and telescopic steering wheel adjustment	■	■	■
Front cupholders x2	■	■	■
Black door mirrors and handles	■		
Electric speed-sensitive power steering	■	■	■
Sunglasses holder	■	■	■
Black front grille	■		
Door pockets	■	■	■
Body-coloured door handles and mirrors		■	■
Asymmetrical rear bench (60:40)	■	■	■
17" alloy wheels with locking wheel nuts			■
410 litre boot space (VDA)	■	■	■
Painted front grille (not body-colour)		■	■
Leather steering wheel		■	■
Leather gear knob (manual only)		■	■
Interior lamp with delay	■	■	■
Panoramic glass roof with one-touch shade		□	■
Front mood lamp			■
Manual air conditioning with glovebox cooler	■		
Leather upholstery with heated front seats			■
Pollen filter	■	■	■
Cloth upholstery	■	■	
Height adjustable driver's seat	■	■	■
Dual zone climate control air conditioning		■	■

Grades & equipment

STANDARD FEATURES AND OPTIONS BY GRADE

	VISIA	ACENTA	TEKNA
Portage			
Rear luggage room lamp	■	■	■
Services			
3-year or 60,000 mile warranty	□ (1)	□ (1)	□ (1)
3-year paint warranty	□	□	□
12-year anti-corrosion warranty	□	□	□
12-months RAC Roadside Assistance	□ (2)	□ (2)	□ (2)

(1) Full terms and conditions, including exclusions, are contained in the Nissan Extended Warranty policy booklet which is available on request by calling 0870 752 7022. It can also be accessed in the Extended Warranty section of this website (Services/Warranty/Extended Warranty/Policy Summary). Nissan Extended Care is underwritten by Motors Insurance Company Limited (Reg'd office Jubilee House, 5 Mid Point Business Park, Thornbury, West Yorkshire BD3 7AG). Nissan Motor GB Ltd. is authorised and regulated by the Financial Services Authority. * Benefits and services are provided by RAC Motoring Services and/or RAC Insurance Limited: Registered Office: 8 Surrey Street, Norwich, NR1 3NG (Registered nos 1424399 & 235583) RAC Insurance Limited and RAC Motoring Services (in respect of insurance mediation activities only) are authorized and regulated by the Financial Services Authority (FSA). RAC terms and conditions apply. Details available from your dealer.

(2) Full terms and conditions, including exclusions, are contained in the Nissan Extended Warranty policy booklet which is available on request by calling 0870 752 7022. It can also be accessed in the Extended Warranty section of this website (Services/Warranty/Extended Warranty/Policy Summary). Nissan Extended Care is underwritten by Motors Insurance Company Limited (Reg'd office Jubilee House, 5 Mid Point Business Park, Thornbury, West Yorkshire BD3 7AG). Nissan Motor GB Ltd. is authorised and regulated by the Financial Services Authority. * Benefits and services are provided by RAC Motoring Services and/or RAC Insurance Limited: Registered Office: 8 Surrey Street, Norwich, NR1 3NG (Registered nos 1424399 & 235583) RAC Insurance Limited and RAC Motoring Services (in respect of insurance mediation activities only) are authorized and regulated by the Financial Services Authority (FSA). RAC terms and conditions apply. Details available from your dealer.

Legend

■ Standard

□ Optional

▣ Standard on some grades

Price list

PRICE MATRIX

	GRADE	BODY	PRICE VAT incl.	PRICE VAT excl.
1.5 dCi 6 speed manual 2WD	VISIA	5 door hatchback	£15,119	£12,718
1.6 16v 5 speed manual 2WD	VISIA	5 door hatchback	£13,799	£11,574
2.0 dCi 6 speed manual 2WD	VISIA	5 door hatchback	£16,599	£13,935
2.0 dCi 6 speed manual 4WD	VISIA	5 door hatchback	£17,999	£15,127
2.0 dCi 6 speed automatic 4WD	VISIA	5 door hatchback	£19,099	£16,029
2.0 16v 6 speed manual 2WD	VISIA	5 door hatchback	£15,199	£12,710
2.0 16v 6 speed manual 4WD	VISIA	5 door hatchback	£16,599	£13,901
2.0 16v CVT 2WD	VISIA	5 door hatchback	£16,299	£13,646
2.0 16v CVT 4WD	VISIA	5 door hatchback	£17,699	£14,837
ACENTA				
1.5 dCi 6 speed manual 2WD	ACENTA	5 door hatchback	£16,619	£13,995
1.6 16v 5 speed manual 2WD	ACENTA	5 door hatchback	£15,299	£12,850
2.0 dCi 6 speed manual 2WD	ACENTA	5 door hatchback	£18,099	£15,212
2.0 dCi 6 speed manual 4WD	ACENTA	5 door hatchback	£19,499	£16,403
2.0 dCi 6 speed automatic 4WD	ACENTA	5 door hatchback	£20,599	£17,306
2.0 16v 6 speed manual 2WD	ACENTA	5 door hatchback	£16,699	£13,986
2.0 16v 6 speed manual 4WD	ACENTA	5 door hatchback	£18,099	£15,178
2.0 16v CVT 2WD	ACENTA	5 door hatchback	£17,799	£14,923
2.0 16v CVT 4WD	ACENTA	5 door hatchback	£19,199	£16,114
TEKNA				
1.5 dCi 6 speed manual 2WD	TEKNA	5 door	£18,119	£15,271

Price list

PRICE MATRIX

	GRADE	BODY	PRICE VAT incl.	PRICE VAT excl.
		hatchback		
1.6 16v 5 speed manual 2WD	TEKNA	5 door hatchback	£16,799	£14,127
2.0 dCi 6 speed manual 2WD	TEKNA	5 door hatchback	£19,599	£16,489
2.0 dCi 6 speed manual 4WD	TEKNA	5 door hatchback	£20,999	£17,680
2.0 dCi 6 speed automatic 4WD	TEKNA	5 door hatchback	£22,099	£18,582
2.0 16v 6 speed manual 2WD	TEKNA	5 door hatchback	£18,199	£15,263
2.0 16v 6 speed manual 4WD	TEKNA	5 door hatchback	£19,599	£16,454
2.0 16v CVT 2WD	TEKNA	5 door hatchback	£19,299	£16,199
2.0 16v CVT 4WD	TEKNA	5 door hatchback	£20,699	£17,391

Price list

OPTIONS

	VISIA	ACENTA	TEKNA	Base Price VAT incl.	Base Price VAT excl.
Safety					
ESP (1.6 petrol and 1.5 dCi)	<input type="checkbox"/>	<input type="checkbox"/>	<input type="checkbox"/>	£365.00	£310.64
Technology					
Satellite navigation with rear view parking camera (in lieu of ultrasonic rear park system)		<input type="checkbox"/>	<input type="checkbox"/>	£1,350.00	£1,148.94
Interior/Exterior					
Panoramic glass roof with one-touch shade		<input type="checkbox"/>	<input checked="" type="checkbox"/>	£700.00	£595.74
Services					
3-year or 60,000 mile warranty	<input type="checkbox"/>	<input type="checkbox"/>	<input type="checkbox"/>	£0.00	£0.00
3-year paint warranty	<input type="checkbox"/>	<input type="checkbox"/>	<input type="checkbox"/>	£0.00	£0.00
12-year anti-corrosion warranty	<input type="checkbox"/>	<input type="checkbox"/>	<input type="checkbox"/>	£0.00	£0.00
12-months RAC Roadside Assistance	<input type="checkbox"/>	<input type="checkbox"/>	<input type="checkbox"/>	£0.00	£0.00

Legend

Standard

Optional

Standard on some grades

PV Price Disclaimer

On The Road Price includes VAT, 12 months Government Vehicle Excise Duty (determined by CO2 emissions figure and fuel type and Government First Registration Fee.

NISSAN QASHQAI
Accessories

PRICES

	BASE UNIT PRICE VAT incl.	BASE UNIT PRICE VAT excl.	REFERENCE NUMBER
Interior/Exterior			
Roof Spoiler	£165.00	£140.24	KE790-JD020
Rear entry guard	£77.00	£65.87	KE967-JD530
Partition rack	£147.00	£125.44	KE964-JD500
Chrome strip for tailgate	£66.00	£56.34	KE971-JD020
Soft trunkliner	£56.00	£47.31	KE965-JD5S0
Chrome door sill strips	£127.00	£108.42	KE760-JD005
Textile trunk mat	£40.00	£34.05	KE840-JD081
Shiga 16" Alloy Wheel (x4)	£664.00	£565.80	KE409-JD210
Chromed stainless steel side bars	£485.00	£412.58	KE543-JD010
Front styling plate	£87.00	£74.38	KE540-JD022
Rear styling plate	£227.00	£193.01	KE540-JD042

· Prices stated are guide prices only and do not include any labour or painting costs where applicable. · In the case of alloys wheels, new tyres may be required. Any prices quoted do not include the cost of tyres. · Certain accessories may not be compatible with other accessories or standard vehicle specifications and equipment. · Some accessories may require additional parts or fitting kits that are not included in the stated price. Accordingly, you should contact your local authorised Nissan dealer for the most current information.

General Disclaimer

This brochure is for general guidance only and its contents do not in any way constitute an offer or representations by Nissan. While all reasonable efforts have been made to ensure the accuracy of the information provided, due to Nissan's policy of continuous product improvement and testing, all particulars contained are subject to constant revision and Nissan reserves the right to change, alter or modify, among other things, specifications, colours and prices of models and accessories, without any notice at any time. Because of the limitations of the printing processes, the colours shown in this brochure may differ slightly from the actual colours of the paint and interior trim materials used. Accordingly you should consult your local Nissan Authorised Dealer for the exact introduction dates for all models and for the most current information. Reproduction in whole or part of this brochure, without the written permission of Nissan, is forbidden. Nissan Roadside Assistance has been arranged for you by Nissan and is provided by RAC free of charge. Details of the contractual arrangements under which RAC Services are provided to you are available by calling 0870 366 5603. Roadside, Recovery and At Home products are provided by RAC Motoring Services (Registered No 1424399 Registered office RAC House, 1 Forest Road, Feltham, TW13 7RR). RAC Motoring Services (in respect of insurance mediation activities only) is authorised and regulated by the Financial Services Authority and within the jurisdiction of the Financial Ombudsman Service and Financial Services Compensation Scheme. Onward Travel is underwritten by RAC Insurance Limited (Registered No 2355834 Registered office RAC House, 1 Forest Road, Feltham, TW13 7RR). RAC Insurance Limited is authorised and regulated by the Financial Services Authority and within the jurisdiction of the Financial Ombudsman Service and Financial Services Compensation Scheme.

